



# UST's e-LeAP: Jumpstarting an e-Learning Initiative for Thomasians

Prof. Alberto A. Laurito  
and  
Asso. Prof. Ninia I. Calaca

# Overview

- ✓ Introduction
- ✓ What is e-LeAP?
- ✓ Why the e-LeAP?
- ✓ Was UST ready for the e-LeAP?
- ✓ What are WECs and FOCs?
- ✓ How did e-LeAP start?
- ✓ Did e-LeAP work?
- ✓ Where is e-LeAP now?
- ✓ What's ahead for e-LeAP?
- ✓ Conclusion



# e-LEAP

UST e-Learning Access Program

Bb™

ck  
lack  
ar  
egin

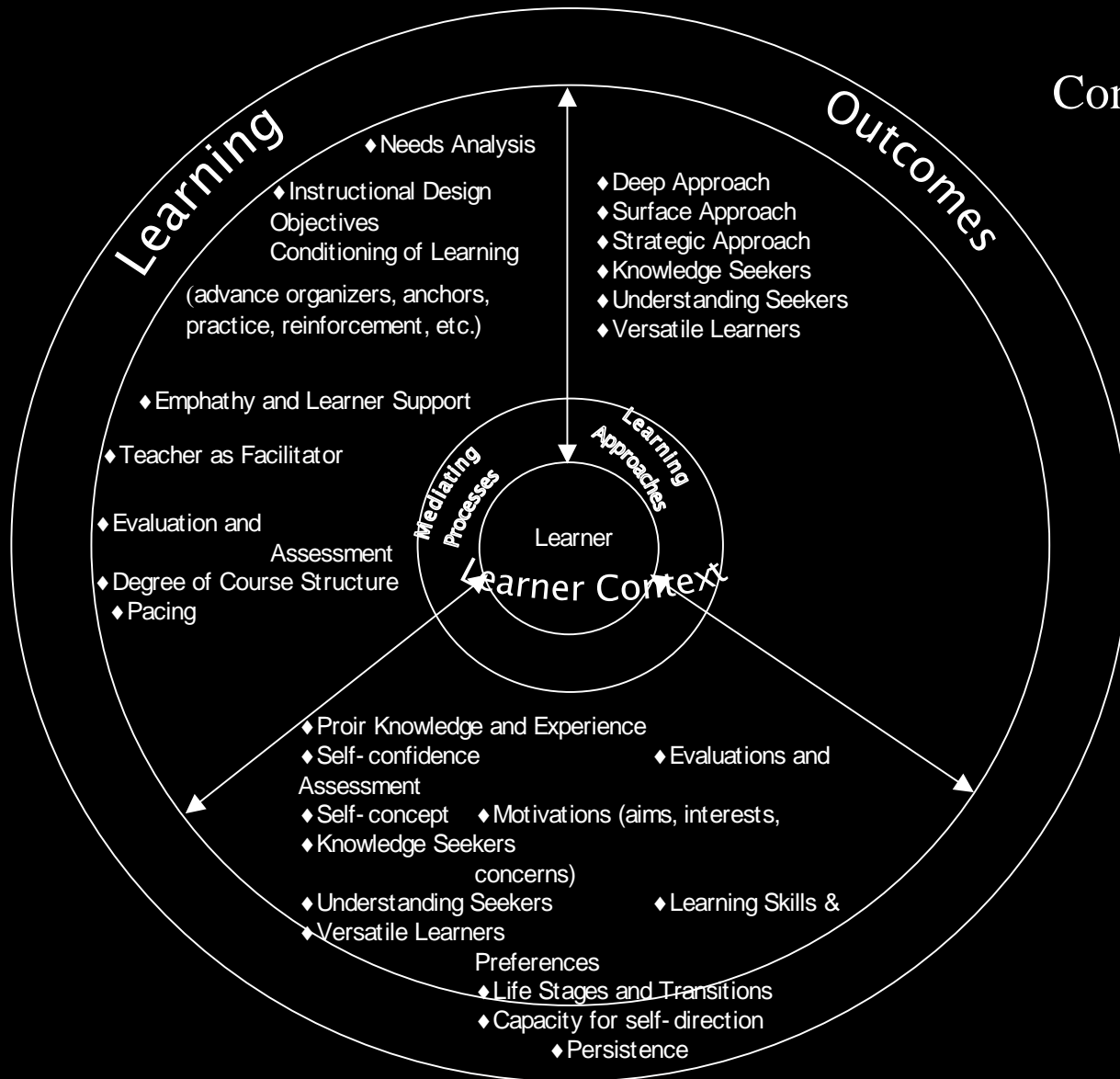
# What is e-LeAP?

- ✓ It stands for the **e-Learning Access Program**, an e-learning initiative approved by the University Father Rector on August 9, 2002 and is now being implemented by the Ed-Tech Center.
- ✓ It aims to provide e-learning exposure to the Thomasian Community through Web-Enhanced Courses (WECs) or Fully Online Courses (FOCs).
- ✓ It is a fast track program, and its full implementation is expected by 2006.

# Why the e-LeAP?

- ✓ To enhance learning by extending the learning experience beyond the classroom
  - Posting of Course Information/Documents/ lecture notes/ assignments
  - Collaboration
  - Assessment
- ✓ To avail of the World Wide Web as additional Resource for Learning
- ✓ To encourage a continuing interaction among learners through the web
- ✓ To facilitate Class Management
- ✓ To build a community of e-learners

Figure 2. UST's  
Conceptual Paradigm of  
e-Learning



# Was UST Ready for the e-LeAP?

“Can we (UST) really start and sustain an e-learning system ?”

# Was UST Ready for the e-LeAP?

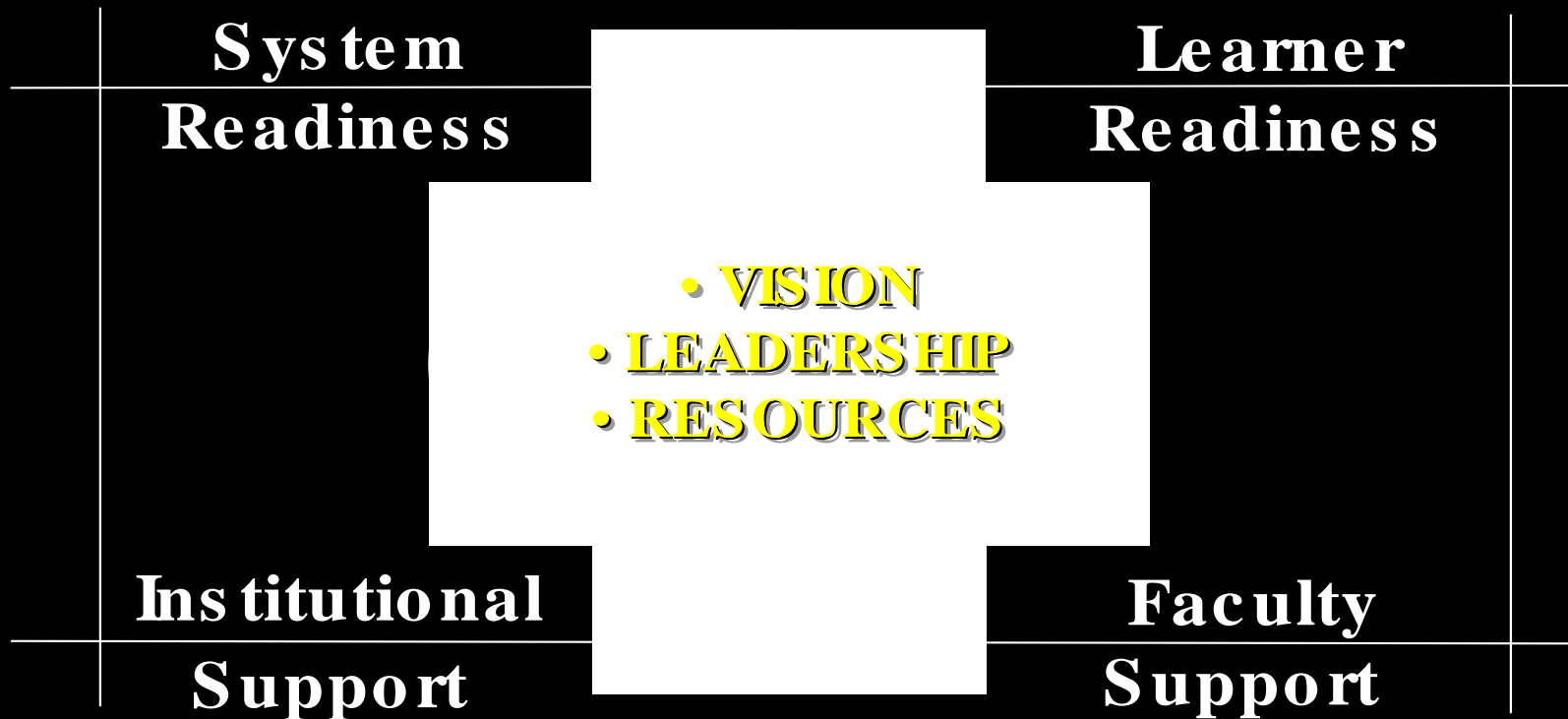


Figure 1. Key Issues in eLearning



# UST's Edge

- ✓ Network Infrastructure
- ✓ Faculty Resources
- ✓ Student Access
- ✓ Learning Management System

# Network Infrastructure

- ✓ Adequate and affordable network bandwidth on demand
- ✓ Timely access to equipment and software
- ✓ Dedicated network staff

# Faculty Resources

- ✓ Large pool of potential course cartridge developers
- ✓ Dedicated developers and the invaluable support of their classes in piloting the program

# Faculty Support/Readiness

- ✓ Existence of champions
- ✓ Retooling Program
- ✓ Access provision
- ✓ Multimedia-equipped classroom
- ✓ Openness to Change

# e-LeAP Organization at the Start

- ✓ Program Director
- ✓ Project Manager
- ✓ Training and Development Manager
- ✓ Content and Deployment Manager
- ✓ Technology and Infrastructure Manager

# Learner Readiness

- ✓ Capability to participate:
  - ✓ Learners' IT Competence
  - ✓ Personal Access
  
- ✓ learner resistance – non-issue

# Student Readiness

## Profile of Respondents

- more than 80% of the respondents are students
- 52% female and 46% male
- access BB at UST, home, and internet cafes
- 85% have Personal Computers at home
- 83% have internet connection at home

# Student Access

- ✓ External Campus Access
  - ✓ PCs at home, Internet Cafes around the campus and elsewhere
- ✓ Internal Campus Access
  - ✓ EdTech (TomWeb Café, Multimedia Production Room), Library Internet access areas, Tomasino Multimedia Classrooms (250), Computer Laboratories
- ✓ Coordination of University network Infrastructures of the USTETC and the STEPS (formerly USTCC)



# Institutional Support/Readiness

- ✓ Infrastructure development
- ✓ Funding
- ✓ Policy Support

# Learning Management System

Blackboard 6.0 Basic Edition  
(now V6.17 enterprise ed with community portal)

vs

Other LMS/ CMS/ LCMS



# What are WECs/FOCs?

- ✓ Web Enhanced Courses (WECs) are traditional courses supplemented by web content and interaction between the students and faculty.
- ✓ Fully Online Courses (FOCs) are stand alone courses with minimum face-to-face contact between the students and the faculty.

- Before eLeap: Series of training on Productivity Softwares and other Educational Technology media

- During eLeAP: Summary of Trainings/Orientation Facilitated for eLeAP during Phase I I

# Summary of Trainings/ Orientation Facilitated for eLeAP by the ELMT during Phase II

	<i>Trainings/Orientation</i>	<i>Date</i>	<i># of Trained/ Oriented on e-LeAP</i>
1	Boot WebCamp	April 10 -11, 2003	60 Faculty
2	e-Counseling Boot WebCamp	April 21- 22, 2003	19 Guidance Counselors
3	NSTP Facilitators	March 1, 2003/	41 NSTP Facilitators
3		April 2003	
4	Dean's WebCamp (Part I)	May 7, 2003	7 Deans and Administrators
5	GradSchool Boot WebCamp	May 16-17, 2003	13 GradSchool Faculty
6	NSTP Student Orientation	June 1--, 2003	3,700 Students
7	Extreme WebCamp	June 2-3, 2003	13 Course Developers
8	Deans' WebCamp (Part 2)	Sept. 6, 2003	13 Deans and Administrators
9	It Committee and IPEA	Sept.19, 2003	12 IT Committee and IPEA Admin
10	Librarians	Sept. 20, 2003	14 Librarians
11	e-LeAP <sup>2</sup>	Sept. 27, 2003	10 Alumni
12	EdTech Staff	October 7, 2003	14 EdTech Staff
13	e-Guidance Counseling (Part 2)	October 13, 2003	10 Guidance Counselors
14	TomCat - Japan Project	September 13, 2003	4 Japanese Visitors
15	Special Extreme Web Camp for Developers	Oct. 21, 22, 27, 2003	17 Developers
16	BB' s FUN	November 5-6, 2003	39 Course Cartridge Users
17	Web Based Activities Seminar (WebQuest)	January 26, 2004	20 Course Developers
18	Web Camp for Dominican Community	January 24, 2004	8 Dominican Fathers
19	Web Camp for Dominican Community	January 31, 2004	8 Dominican Fathers
20	Web Camp for Dominican Community	February 7, 2004	7 Dominican Fathers
21	GS Special Training	January 21, 2004	2 GS Faculty Members
22	Medical Doctors	Dec 4, 5, 2003	14 Medical Sectors
	<b>Total</b>		<b>4045</b>

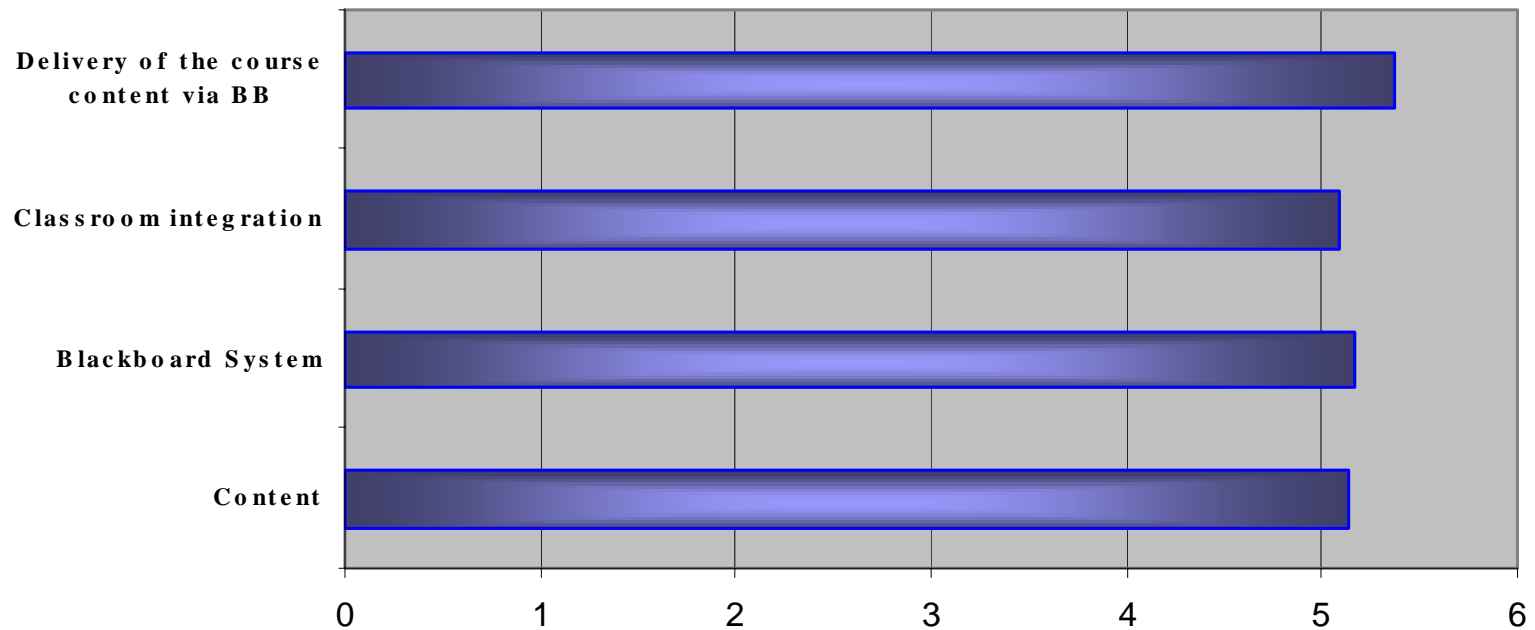
# How did e-LeAP start?

- ✓ Acquisition of a “new” BlackBoard
- ✓ Development of a Project Implementation Plan
- ✓ Identification of Pilot Courses
- ✓ Identification of Faculty Developers
- ✓ Training
- ✓ Upgrading of Infrastructure
- ✓ Development of Course Cartridges
- ✓ Deployment of Course Cartridges
- ✓ Evaluation of Deployed Course Cartridges

# Did e-LeAP Work?

- ✓ Course Site Evaluation
- ✓ BlackBoard System Evaluation
- ✓ Evaluation of Deployed Courses
- ✓ Interview with the Faculty Members actually involved in the Pilot (Phase I)

# Overall Rating



Scale

Qualitative Rating

1.00 - 1.50

not applicable/ not provided

1.51 - 2.50

very inadequate/ very poor

2.51 - 3.50

inadequate/ poor

3.51 - 4.50

average/ fair

4.51 - 5.50

good/ satisfactory

5.51 - 6.00

very good/ very satisfactory



# Highlights of AY 2003 - 2004

- Fully On-line Courses
- 38 Web –Enhanced Courses
- 6,312 students
- 32 trainings, conferences and seminars
- 4,055 Thomasian oriented on Bb system
- 2 Exemplary Papers at National e-Learning Conference
- Notable Participation in Asia-Pacific and U.S. Blackboard Conferences

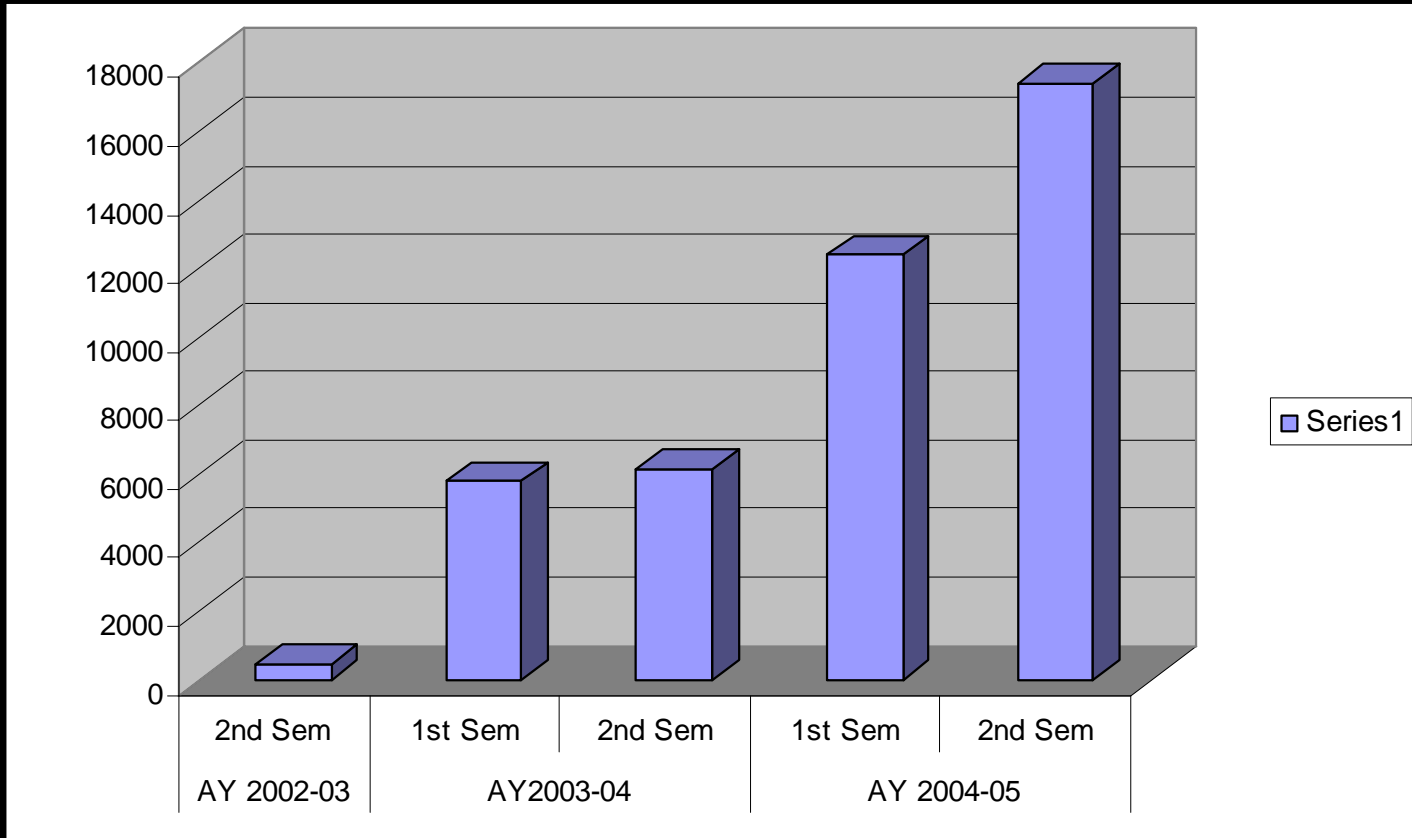
# Highlights of AY 2004 -2005

- Two Fully On-line Courses in place
- Additional 11 Web –Enhanced Courses developed
  - 22 WEC for development, including e-guidance
- 15,826 enrolled users
- 18 trainings held
- Creation of Organizational sites
  - UST Planning 2004
  - UST MidYear Planning 2004
  - TQM Central
  - Edtech Quality Team
  - PAD Central
  - SWDB and Student Organization Sites

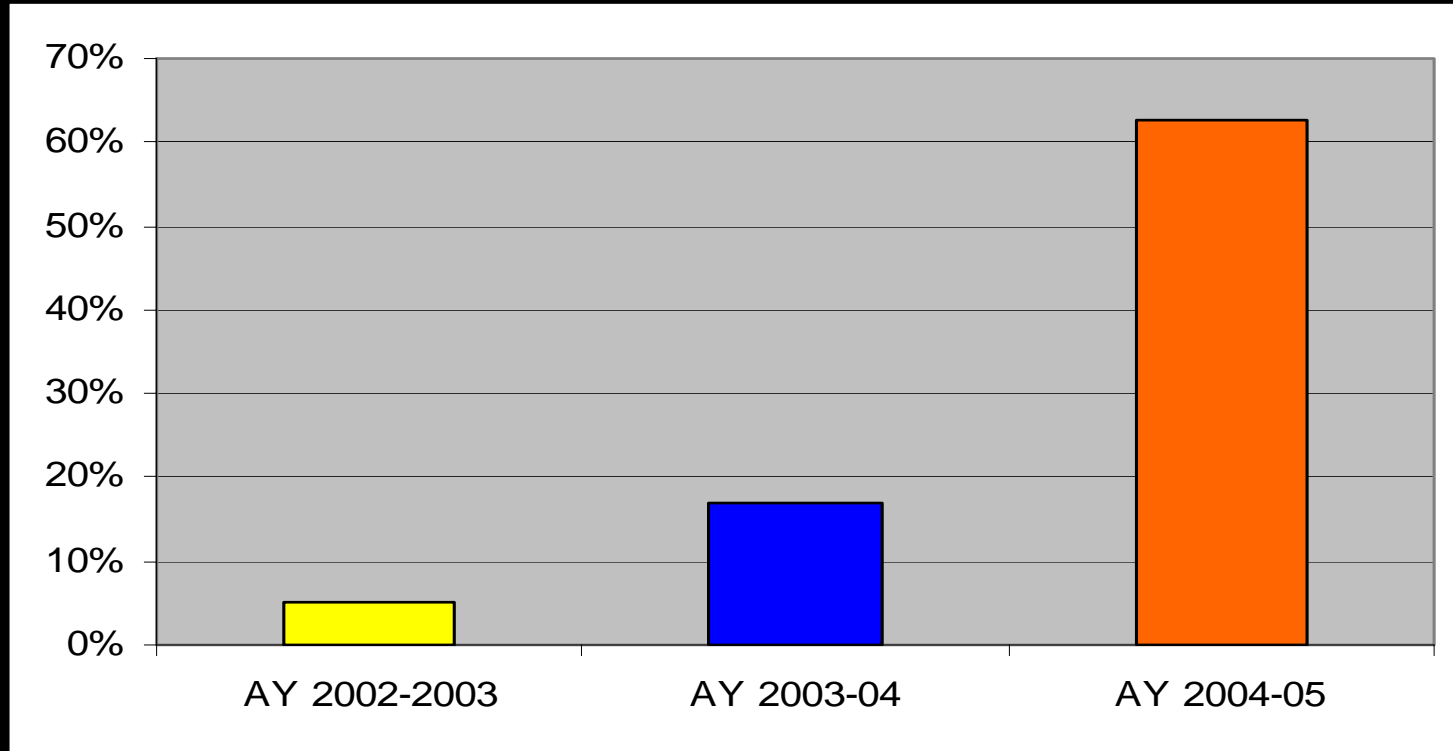
# Where is e-LeAP Now?

- ✓ Evaluation of Developed and Deployed Courses
- ✓ Identification of New Courses
- ✓ Identification of New Faculty Developers
- ✓ Continuing Training for Developers
- ✓ Course Cartridge Development and Deployment
- ✓ Training for Course Cartridge Users
- ✓ Customized Training for Professional Courses
- ✓ Development of Other Blackboard Applications
- ✓ Upgrading of Hardware
- ✓ Target Number: 18, 000+ users by end of AY 2005-06
- ✓ Extension Training for DOMNET schools

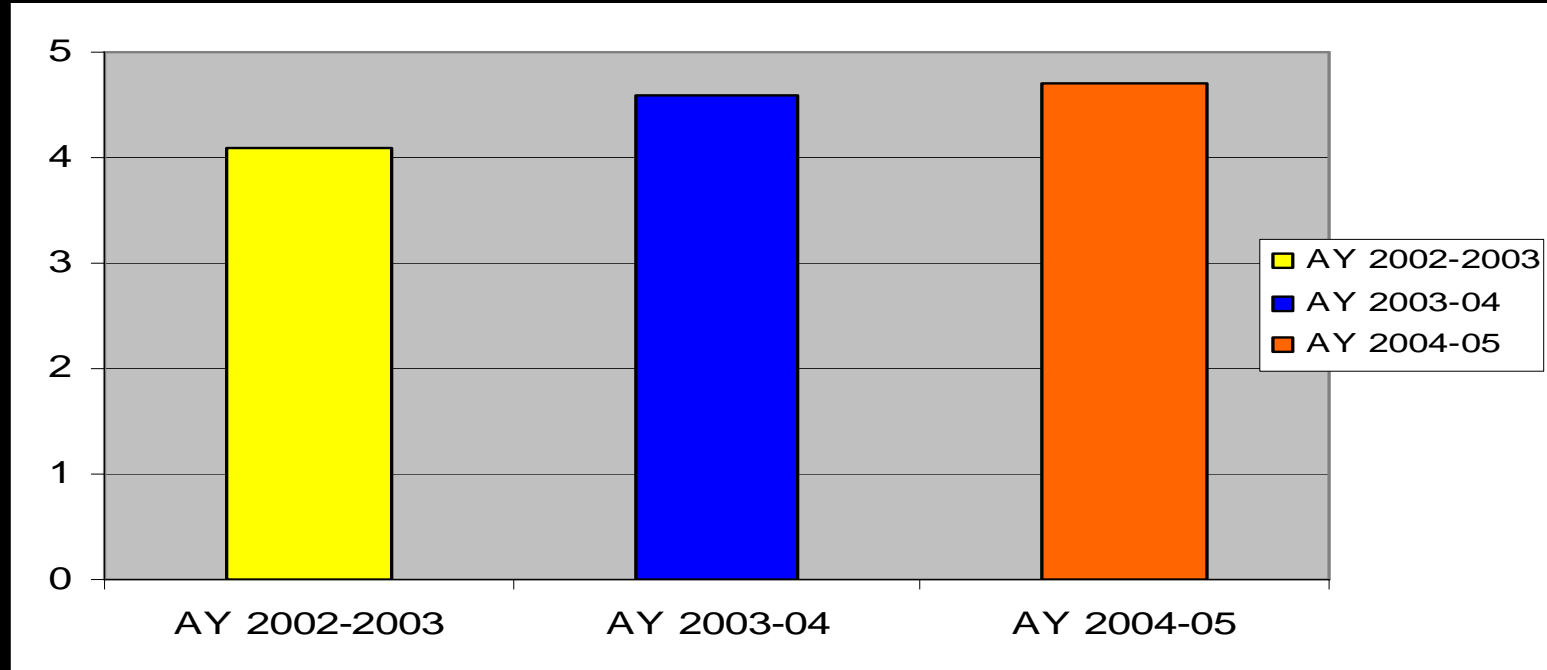
# Chart Showing Number of Actual eLeAP users



# Chart Showing the Percentage of General Courses Developed



## Chart Showing the Evaluation Results of the Implemented Courses



**Legend:**

1.0 – 1.5 – very inadequate/ very poor

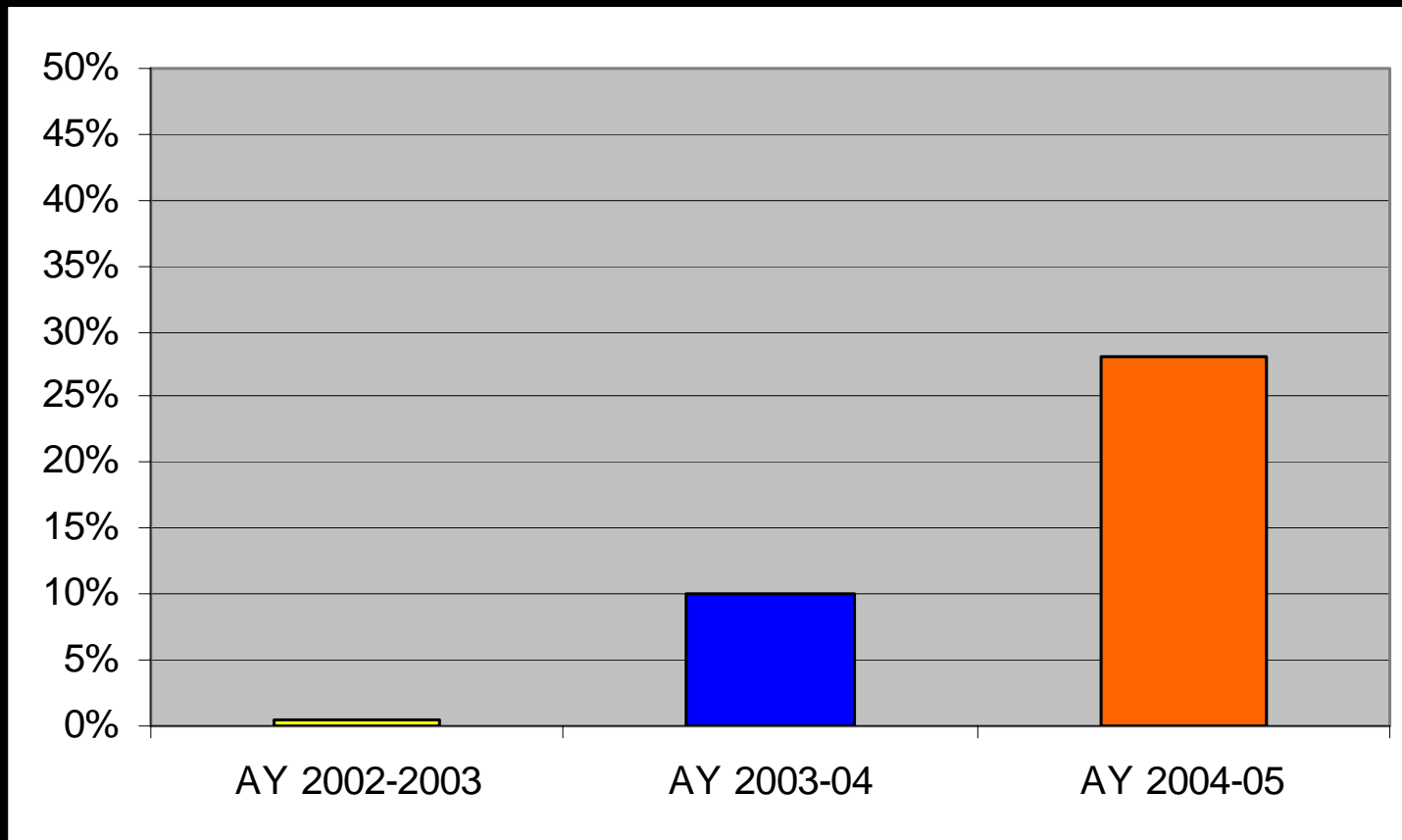
1.6 – 2.5 - inadequate/ poor

2.6 - 3.5 – average/ fair

3.6 – 4.5 – much average/ satisfactory

4.6 – 5.0 – very much average/ very satisfactory

## Chart Showing the Percentage of Faculty Members Involved in eLearning



# e-LeAP Organization Now

- ✓ Program Director
- ✓ Project Manager
- ✓ Training and Development Manager
- ✓ Content and Deployment Manager
- ✓ Technology and Infrastructure Manager
- ✓ Pool of Course Site Developers
- ✓ Pool of Educational Technology & E-learning Applications Coaches (ETEACH)



[This is eLeAP](#)

# What's Ahead for e-LeAP?

- ✓ Development of new courses
- ✓ Deployment of Developed Courses
- ✓ Planning of Next Batch of Major Courses/Faculty
- ✓ More WebCamps/ Trainings
- ✓ Development of Building Blocks
- ✓ More Powerful BlackBoard Servers
- ✓ Improved Access Systems
- ✓ Other BlackBoard Applications

# Conclusion

- ✓ **Global Status**
- ✓ **Pioneer and Trend - Setter**
- ✓ **Streamlined Operations**
- ✓ **Globally Competitive Students/ Graduates**
- ✓ **Enhanced Faculty**
- ✓ **Lower Attrition Rate**

Thank You!