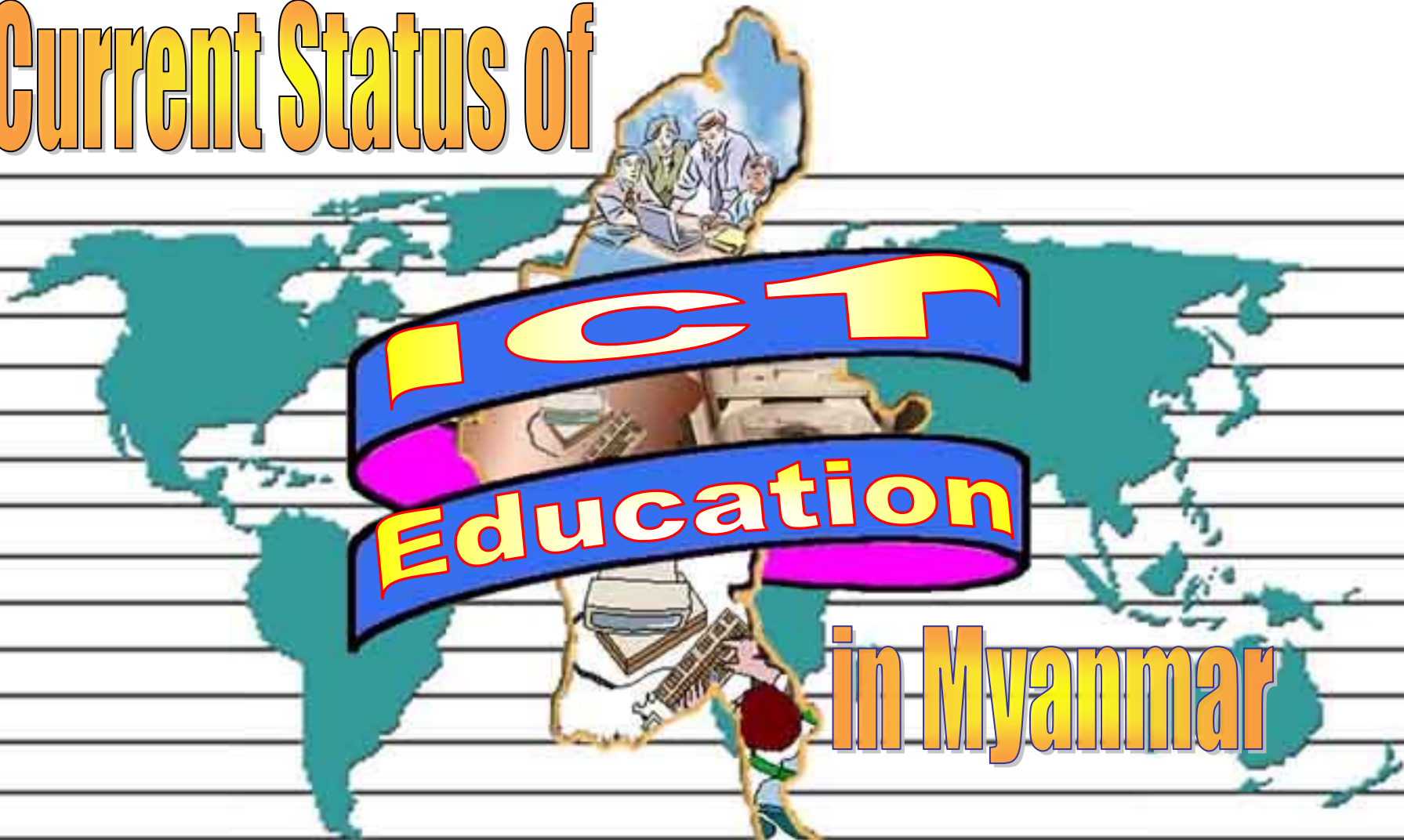


Current Status of



in Myanmar

**Dr. Pyke Tin, Dr. Aye Thanda
University of Computer Studies,
Yangon**



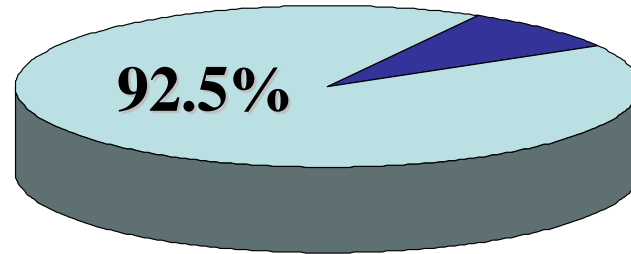
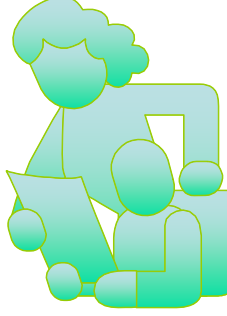
Area

676,553 Sq. Km

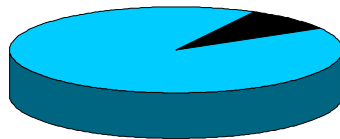
Population

51 millions

Literacy rate

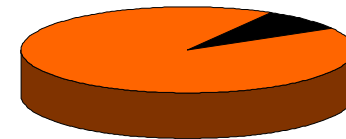


Literate female



91.8 %

Literate male



92.7 %

Education Structure

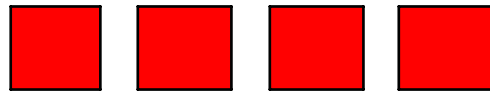
Basic Education

Age	5+	6+	7+	8+	9+	10+	11+	12+	13+	14+	15+			
Grade	Kg	1	2	3	4	5	6	7	8	9	10	Higher Education		
		Primary 5					Middle 4					High 2		

Education Structure

Higher Education

 **Economics, Computer Science**

 **Education**

 **Nursing, Paramedical, Pharmaceutical,
Community Health, Veterinary Sc, Agriculture**

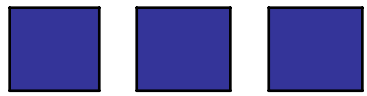
 **Forestry**

 **Dental Medicine, Engineering**

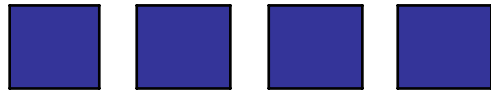
 **Medicine**

University and Colleges

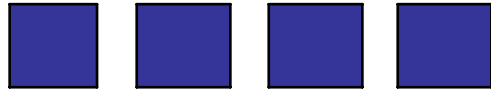
First Degree



**Arts and Science Universities, Degree Colleges,
Universities of Distance Education**



University (Law)



Workers' College

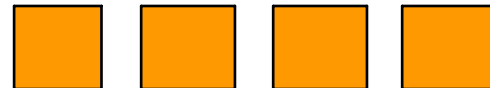
Post-Graduate Degree



Master



M.Res / Ph.D (Prelin)

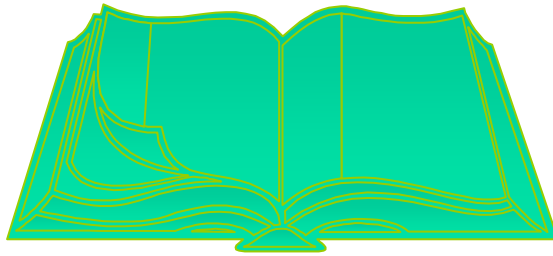


Doctorate

Myanmar Education Vision

To create an education system that can generate a learning society capable of facing the challenges of the Knowledge Age.





- ✓ **To accomplish the Vision and the Objectives of the Long Term Education Promotion plan**
- ✓ **to create a highly qualified human resource in Myanmar**

new Basic Education Schools are established

**Higher Learning institutions are being upgraded and
new ones are established**

according to the needs of the regional development.

Number of Basic Education Schools

High	Middle	Primary	Total
1,738	5,512	32,749	39,999



Number of Students at Basic Education

High	Middle	Primary	Total
632,663	1,921,676	4,929,635	7,483,974



Number of Teachers at Basic Education

High	Middle	Primary	Total
18,288	56,543	145,679	220,510



A National IT Policy



Country's National Information Infrastructure (NII)

will be needed

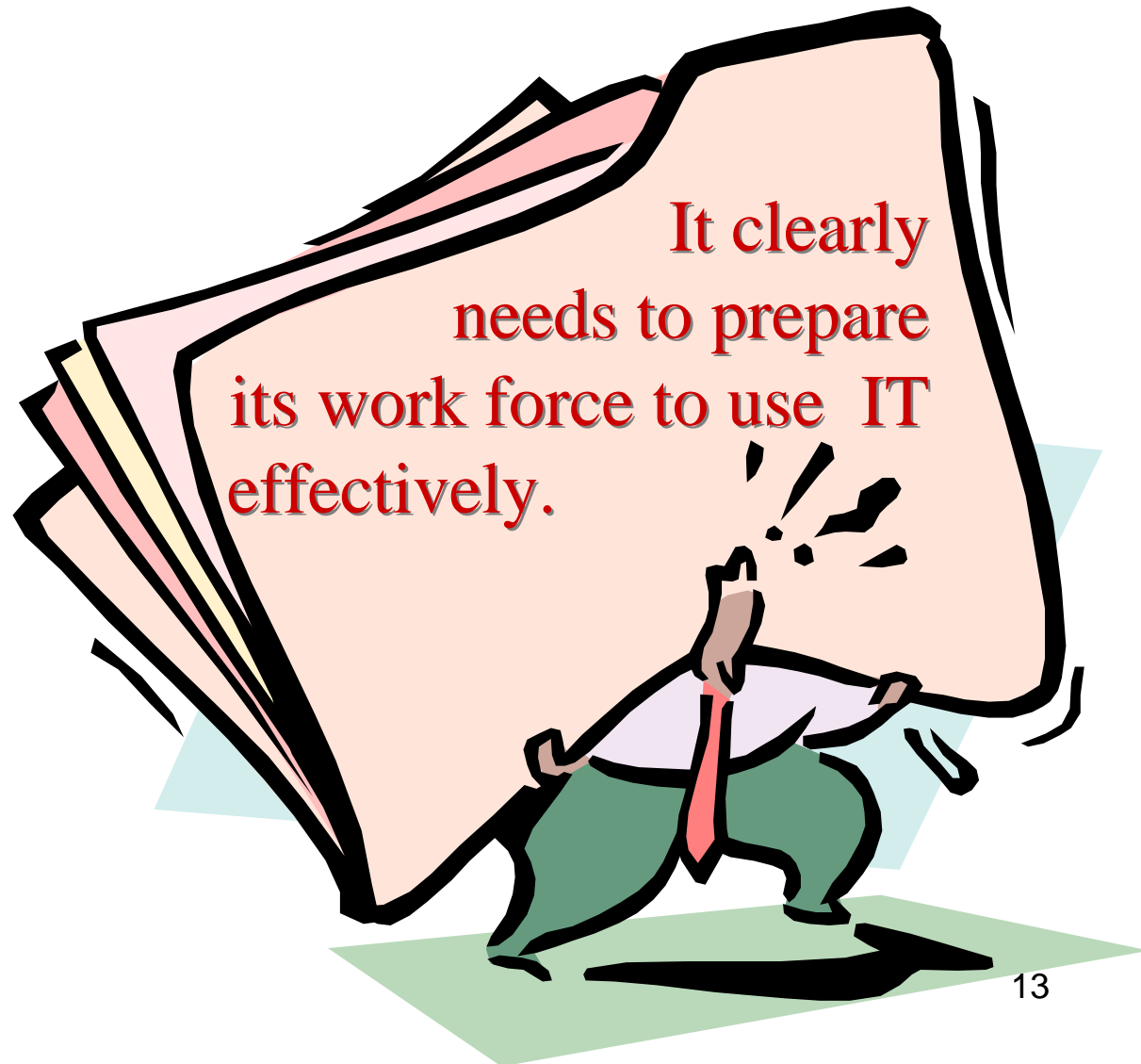
as a foundation layer

to construct a comprehensive GII.



A decisive factor in the success of IT development

**Making
full
use of
human
potential**



E-Education and e-Learning Initiatives in Myanmar

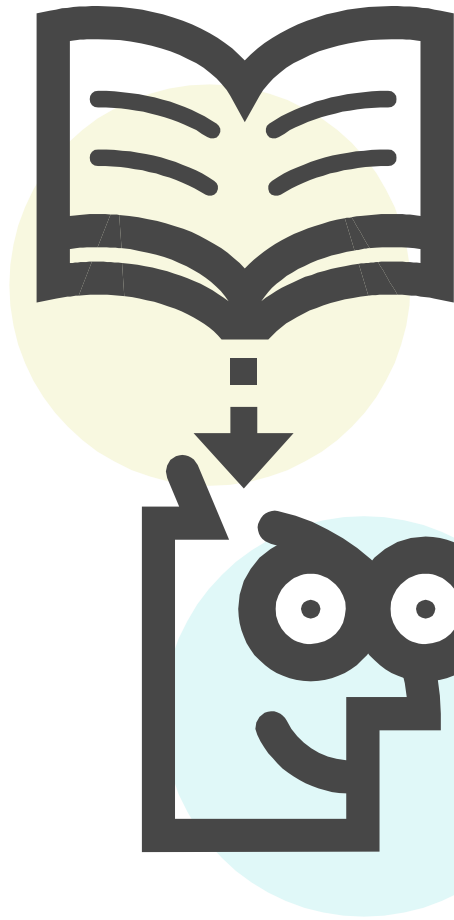
Several developments necessitated

- ✓ *the need to meet the challenges of the Information Age (especially IT literate population)*
- ✓ *the Multimedia Schools are built and begin operations since 1996*



Key components in IT education are:

- (i) To conduct research on how to apply IT in education and training.**
- (ii) To established IT department at the universities to explore the possibility of further education programs at the professional level.**
- (iii) To develop all forms of training, disseminate knowledge and tech the use of computer as a working tool for part of the labor force.**
- (iv) To formulate and implement a plan for IT education that would ensure that all pupils in high school, and above receive training in IT and have the opportunity to practice using computers.**



New curricular emphases are:

- **Knowledge acquisition**
- **Analytical, creative thinking and the ability to make decisions and solve problems**
- **IT competency**
- **Proficiency in an international language**

Formal ICT education

24 Government Computer Colleges were opened in states and divisions in addition to Universities of Computer Studies, one in Yangon in Lower Myanmar and another in Mandalay under Ministry of Science and Technologies.



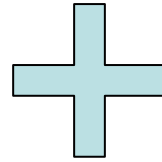
*Diploma, Bachelor,
Master, Doctorate
courses on ICT*

and

*Undergraduate
ICT courses.*

e-Education

Traditional
instructor-led
training



riches of
computer-based
training



Multimedia classrooms were established in schools and higher institutions



**more than 1000 basic educations
schools have been provided multimedia
class rooms (2002)**



156

*Colleges,
Degree Colleges and
Universities in Myanmar*



Data Broadcasting System for e-Learning

- Data broadcasting system used Internet Protocol (WAN)
- Used wireless and satellite communication
- Main server was located at Myanmar TV office
- Wireless communication between University of Distance Education (UDE) and MRTV office
- By using Thai Com-3 Satellite
- One way communication between UDE and learning centres are made.



Very Small Aperture Terminal (VSAT) and iPStar Broad Band Network were introduced for the whole country.

e-Learning centres were upgraded to two-way communication system or the interactive system.



Myanmar Education Network, utilizing VSAT and iPStar was established in Oct 2001.

These e-Learning centres are to be installed at Universities, Colleges and college departments.

ICT Awareness of Myanmar Education

- ❖ 1029 schools have been equipped with computer training facilities
- ❖ Computer training course is the compulsory subject for the grade 6 to 11 students
- ❖ Number of Multimedia school

Yangon Division	81
Mandalay Division	175
Ayeyarwaddy Division	119
Sagaing Division	94
Magway Division	73
Other States and Divisions	487
Total	1029

ICT Awareness of Myanmar Education

❖ No. of Computer Training Centre	146
❖ No. of e-Resource Center	50
❖ No. of e-Learning Center	51
(Total 619 centre)	
❖ No. of Multimedia Lecture Room	56
❖ No. of Language Lab	93

SCOPE

For the development of IT in Myanmar by year 2010, the following are identified as priority areas for implementation

- IT Application
- IT Education & Human Resource Development
- Foundation for IT industry
- ICT Infrastructure
- Legal Infrastructure
- ICT Standardization and Liberalization

Strategy

- Efforts on IT Education and IT human Resource Development should be given high priority
- To promote the awareness of IT
- Promote and facilitate the liberalization in investment, production and distribution of IT products and series
- Develop regulatory and legislative frameworks to facilitate the growth of e-Commerce



International Cooperation

Active Member of SOI-Asia Japan ASEAN Exchange Project.

- **Based on METI assistance develop SOI Asia project (2001~2003)**
- **Enjoying many lectures concerning high quality University level education.**
- **The distribution of live lectures of Professors from Japan Universities.**
- **MoU between KEIO University and UCSY**
- **Joint Ph.D Programme between KEIO and UCSY has been setup**
- **This was due to effort of Professor J. Murai**
- **METI support for this joint degree Ph.D programme will be appreciated**



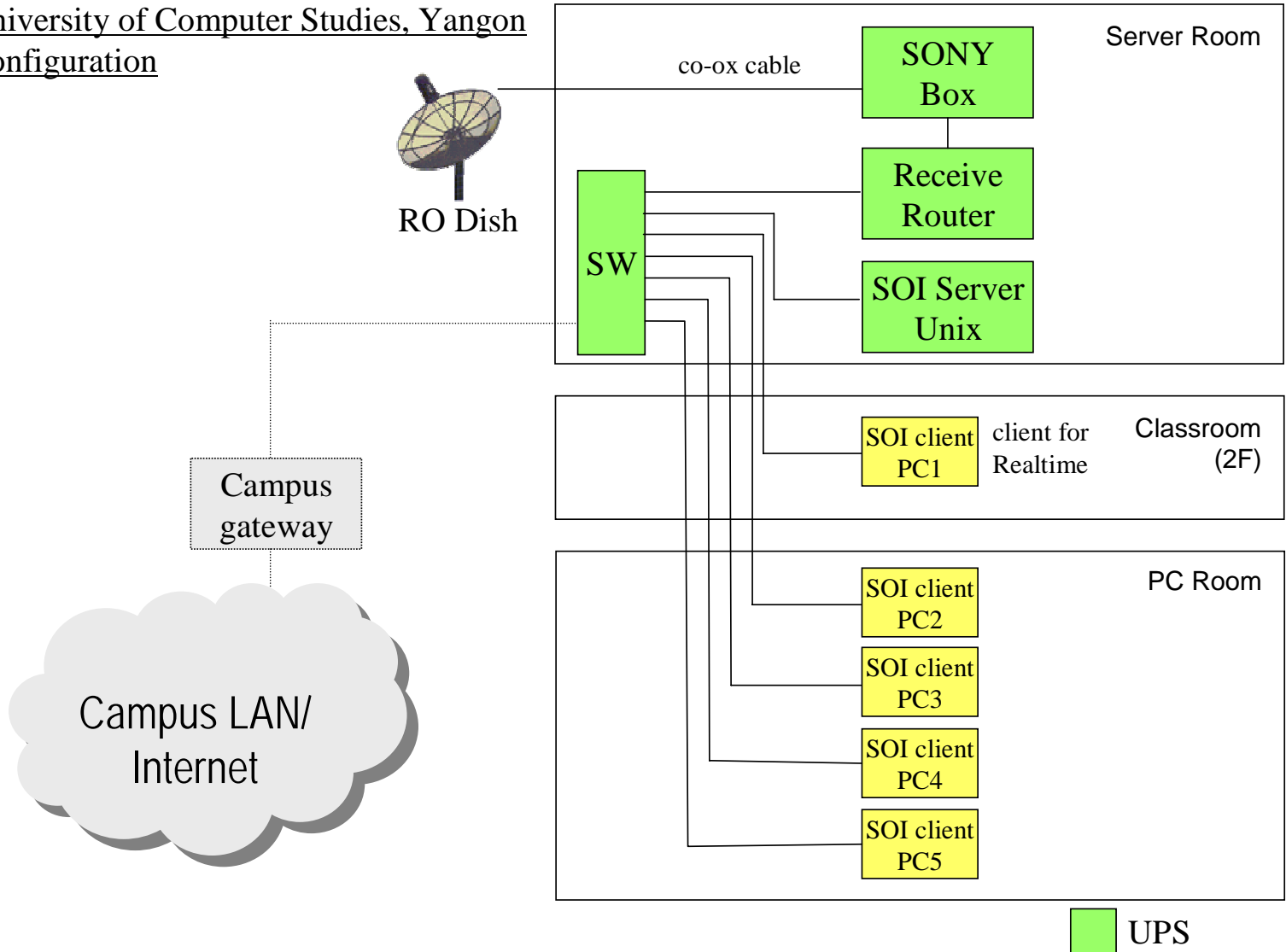
Internet Connectivity

Stable 128 kbps connectivity to local ISP dedicated to this project



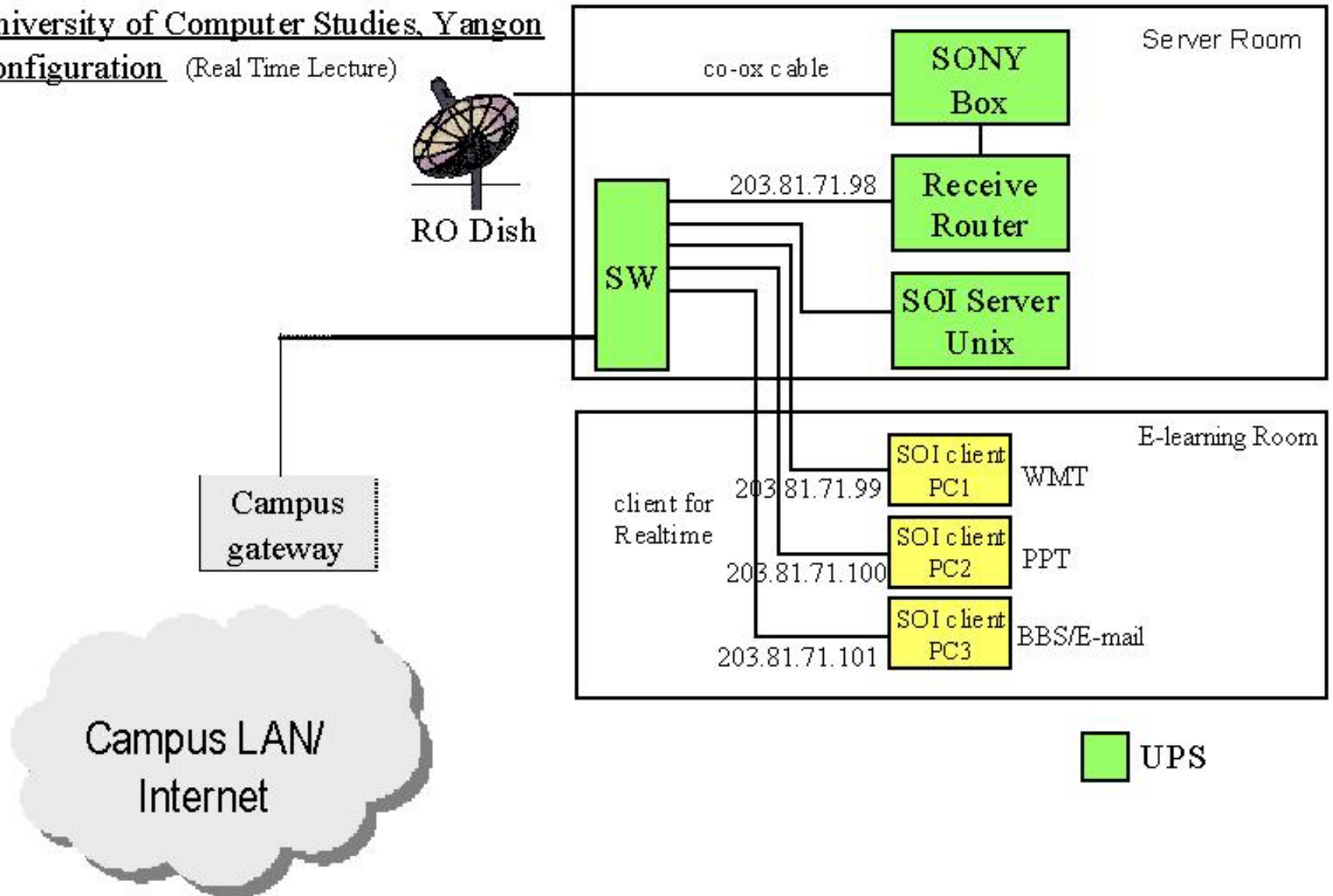
SOI ASIA Setup for University of Computer Studies, Yangon

University of Computer Studies, Yangon
Configuration

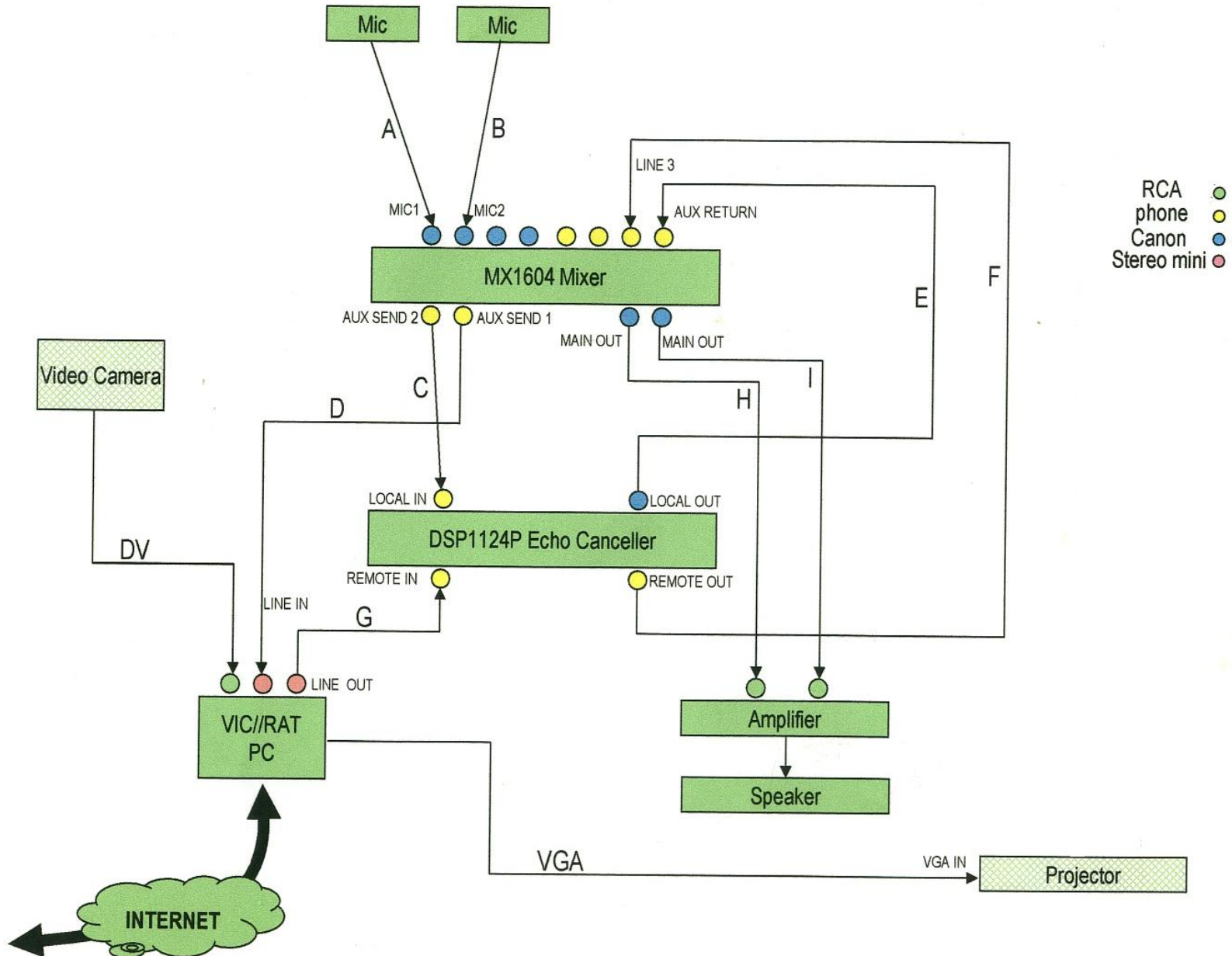


Network Configuration of UCSY during Real Time Lecture

University of Computer Studies, Yangon
Configuration (Real Time Lecture)



UCSY'S Configuration





Lecture Room Environment

- **Sending video/audio with WMT (500kbps) from Japan.**
- **30seconds to 1 minute delay from WMT Encoder in Japan to WMT player in Myanmar.**
- **Question and answer session is done in VIC/RAT or by writing to BBS.**
- **2 screens and 2 projectors, 1 Digital Camera**
- **3 PCs (WMT, PPT, BBS/VIC/RAT)**
- **Printed out version of lecture material is available**



UNIVERSITY OF COMPUTER STUDIES, YANGON



History

University

Curriculum

Conference



Welcome to UCSY

Hlaing Campus, Themaing College P.O.(11052),
Hlaing Township, Yangon, Myanmar
Fax: 951664709 Phones:951-665686,664421

[*http://www.ucsy.edu.m*](http://www.ucsy.edu.m)

m



Antenna



Incorporate with SOIASIA

- **Joint Research Program**
- **Joint Degree Program**
- **Post Doctorate Program**



Difficulties

- We have **transmitting difficulties**
 - Need to take Global IP from ISP during lecture period (RO site)
 - video capture card
- Could you provide **technical assistant** and more technical training for operators?
- Need to **update** the server



JAIIST



- **MoU between JAIIST and UCSY**
- **Interactive discussion between Professors and participants in Myanmar.**
- **Exchanging knowledge with other participants from ASEAN countries.**
- **Learning many archived lectures at any time**

2004 Courses (e-Learning through SOI Asia)

- **Advanced Internet Technology course II**

- April ~ May, October ~ November**

- **Fisheries**

- September ~ October**

- **Bio-Tech bio tech/bio informatics**

- February ~ March**

- **Engineering**

- June ~ August**

Myanmar-Japan e-Learning centre

Established in Myanmar in 2001

Under MoU between METI & e-Task Force

*Provides training courses for Japan
Information Technology Engineer Examination
(JITEE)*





Conclusion



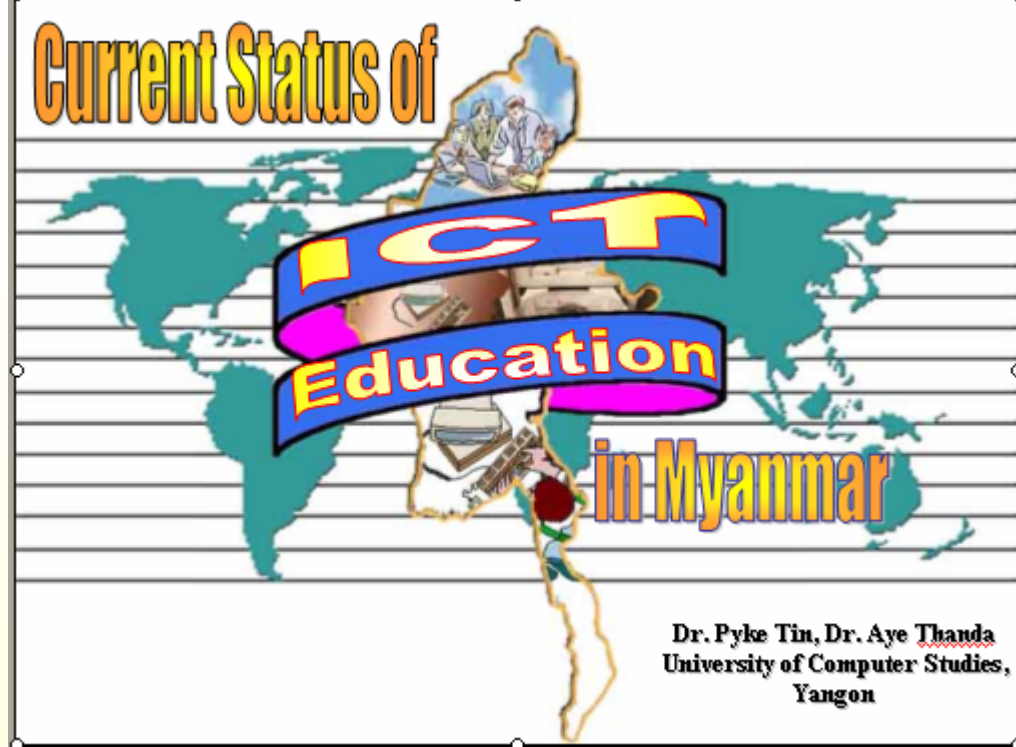
*Institutions
Plays
A major role*



The implementation of an effective and sustainable an e-Education and e-Learning in Myanmar will require

Proficiency in information technology and human resources development





Thanks for your attention.