

“Strategy of e-learning development in the Network of Technical and Vocational Education in Indonesia.”

Mr. BINSAR SIAGIAN,
 Technical Education Development Centre, Bandung



Indonesia Country Report

AEN Conference 2003, Ariake
 Washington Hotel, Tokyo

AEN-Survey Research on e-Learning in Asian Countries – Fiscal Year 2002

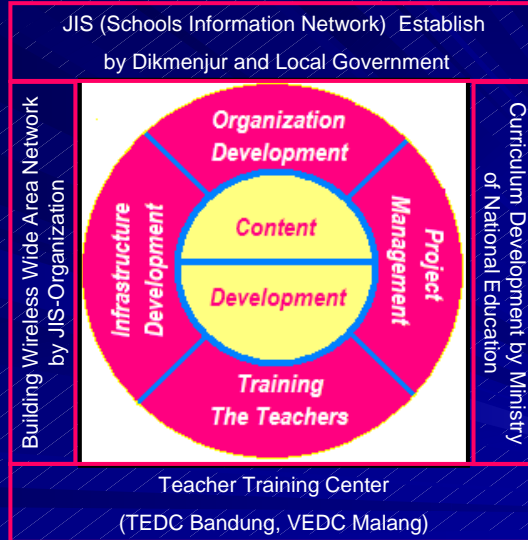
In Indonesia, although needs for remote education are high, in view of its wide spreading territory and 200 millions of population, e-Learning which uses networks over the Internet is not developed. Factors preventing e-Learning from evolving include the Indonesian government's policy, which does not admit diplomas for e-Learning except for Indonesian

Open Learning University, a correspondence education style university. On the other hand, a few colleges (Bandung Institute of Technology, Bogor Agricultural University, Gadjamada University, Diponegoro University, etc.) have started to investigate e-Learning. Lectures given in English are scarce.

| Institution name / Project name | Category | Synchronous | Asynchronous | Remarks (Important point, keyword, financial sources, budget scale) |
|---|--------------------------------------|-------------|--------------|---|
| Indonesian Open Learning University | University | x | x | Offers tutorials only online. |
| Petra Christian University of Surabaya | University | | x | Offers online a part of lectures |
| Indonesian Distance Learning Network (IDLN) | Governmental organization | | | Conducts surveys on e-Learning |
| (MHA:Ministry of Home Affairs) | Governmental project | x | x | Currently planning Implementation plan is aided by Japanese Ministry of Public Management, Home Affairs, Posts and Telecommunications |
| Directorate for Vocational Education (Dikmenjur) | National Education Department | | | Sharing cost Central Gov. and Local Government |

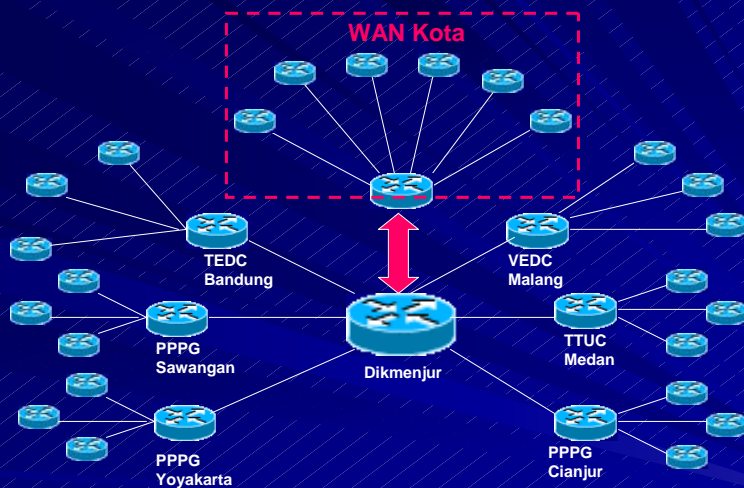
AEN Conference 2003, Ariake
 Washington Hotel, Tokyo

E-Learning Strategy Development



AEN Conference 2003, Ariake
Washington Hotel, Tokyo

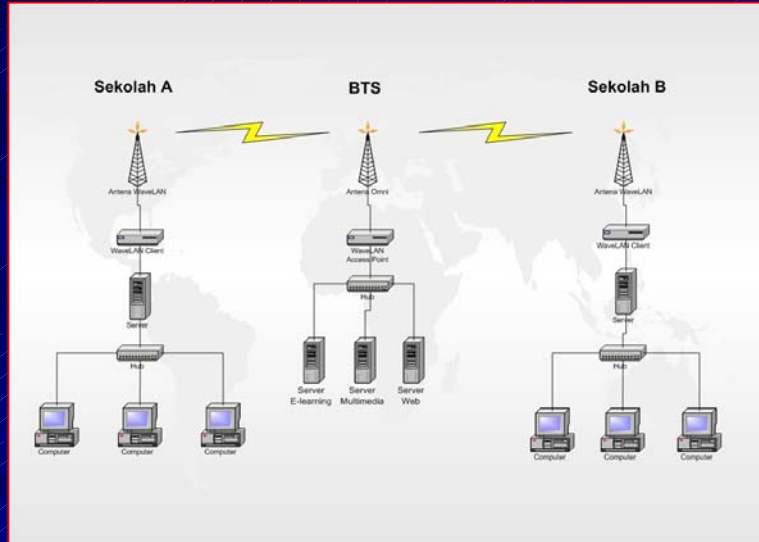
Network Planning 2002



Networks Supporting by 48 "CISCO" Local Academy, at Vocational Schools (SMK)
450 Teachers has upgrade the skill for Networking and Web Developer.

AEN Conference 2003, Ariake
Washington Hotel, Tokyo

WAN-KOTA (City Network)



AEN Conference 2003, Ariake
Washington Hotel, Tokyo

Organization And Network Development Area



4.169 Vocational Schools
7.900 General Senior Secondary Schools
12 + 27 Teacher Training Centre

101 Schools with 553 PC's
4 Teacher Training Centre 200 Pc's
2003-2004: **47 WAN Establishes**

AEN Conference 2003, Ariake
Washington Hotel, Tokyo

e-Learning Content Development

Since January 2002, We decided to create an e-learning teambuilding :

Job Target is :

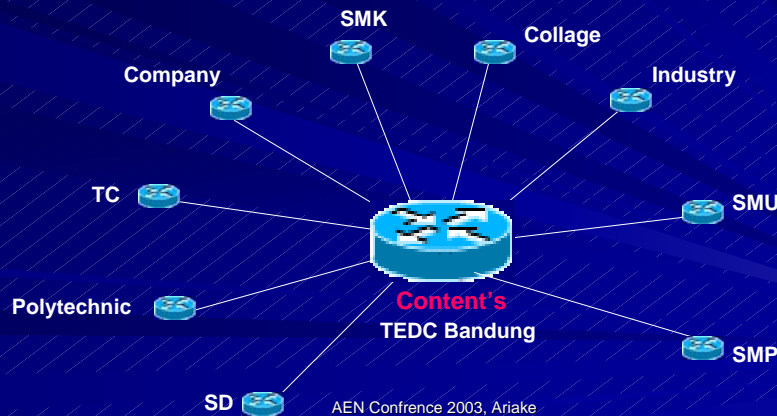
1. Preparing content for “Teknik Digital “
2. Preparing Software Simulator “ Digital Trainer “
3. Preparing Software for “ Typing Tutor”

All above running on the PC Base (not Web Base)

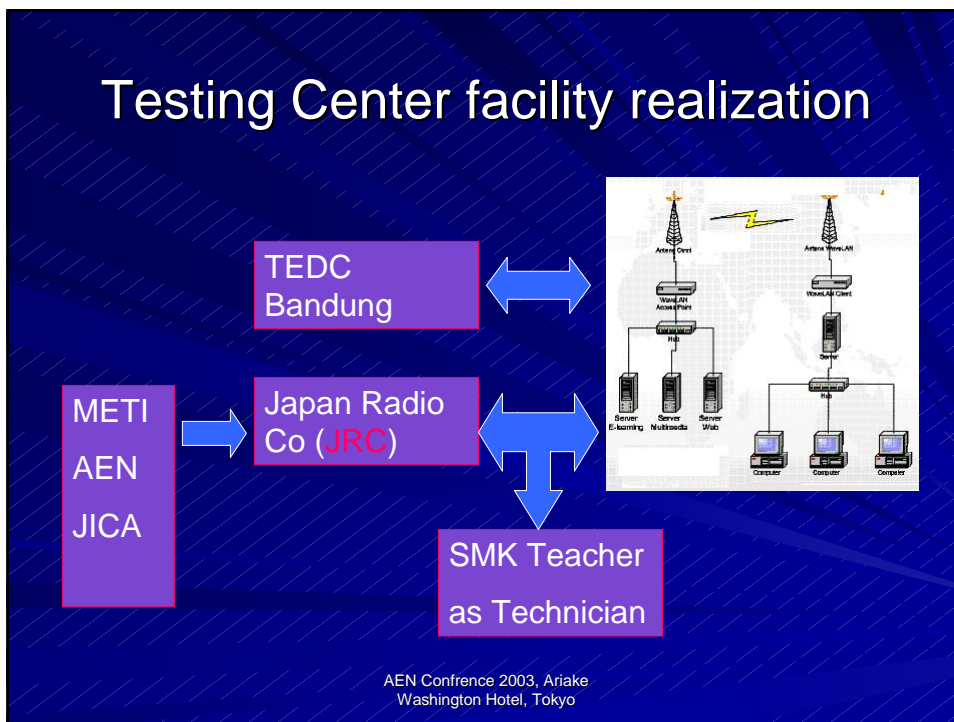
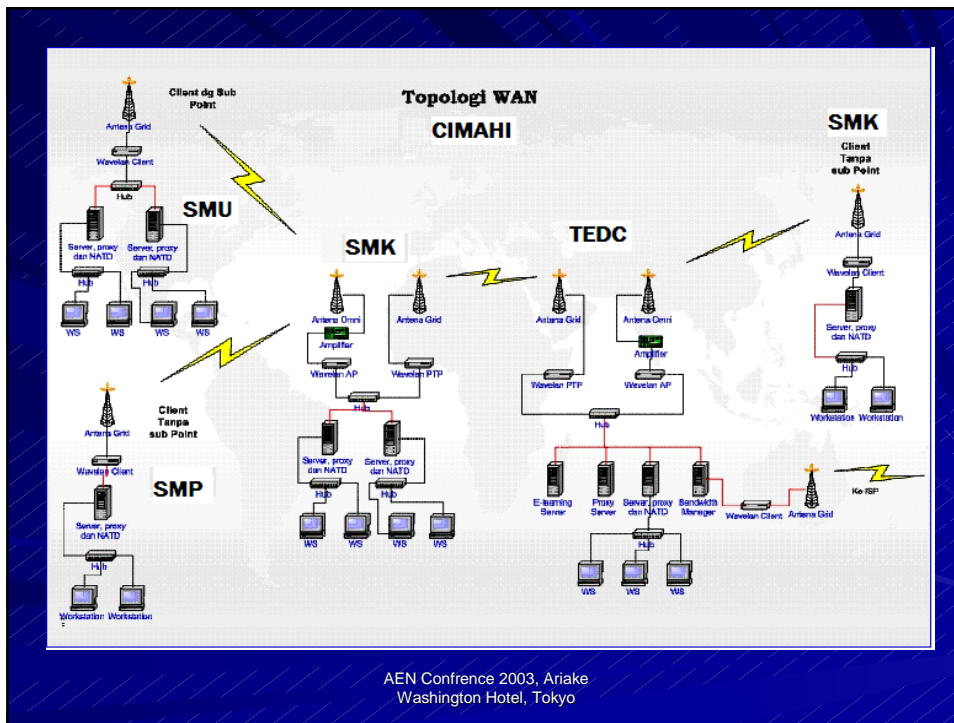
AEN Confrence 2003, Ariake
Washington Hotel, Tokyo

Establishing e-learning Content Developer group

Since the e-learning content consist of many subject matter from different discipline. We need to establish the e-learning Content developer group . The member of this group are the teacher or Trainers from several Difference Institution. To facilitate the communication and coordination among the group members, the computer Network should be setup.



AEN Confrence 2003, Ariake
Washington Hotel, Tokyo



Network Development on the East Indonesia



AEN Confrence 2003, Ariake
Washington Hotel, Tokyo

"Teknik Digital" Overview

Kombinasi Fungsi AND, NOT menjadi NAND Gate

Fungsi NAND 2 Input

Bila ketiga fungsi dasar "AND, OR, dan NOT" tidak dapat memenuhi semua kemungkinan dalam Operasi Logik, maka beberapa kombinasi dapat dilakukan, kemudian kombinasi tersebut menghasilkan sebuah nama baru, simbol yang baru, untuk fungsinya sendiri.

Pada halaman ini akan dijelaskan kombinasi dari ketiga Gate Dasar tersebut.

Kombinasi pertama disebut NAND yakni perpaduan Gate AND dan Gate NOT

Kombinasi kedua disebut NOR yakni perpaduan Gate OR dan Gate NOT

Gambar : 12 Simbol NAND Gate

Persamaan Fungsi : $A \cdot \bar{B} = F$

AND + NOT Gate NAND Gate 2 Input

NAND Gate

Gambar : 13

True Table NAND

| B | A | F |
|---|---|---|
| 0 | 0 | 1 |
| 0 | 1 | 1 |
| 1 | 0 | 1 |
| 1 | 1 | 0 |

Timing diagram showing waveforms for inputs A, B, and output F over time t.

Start Pause

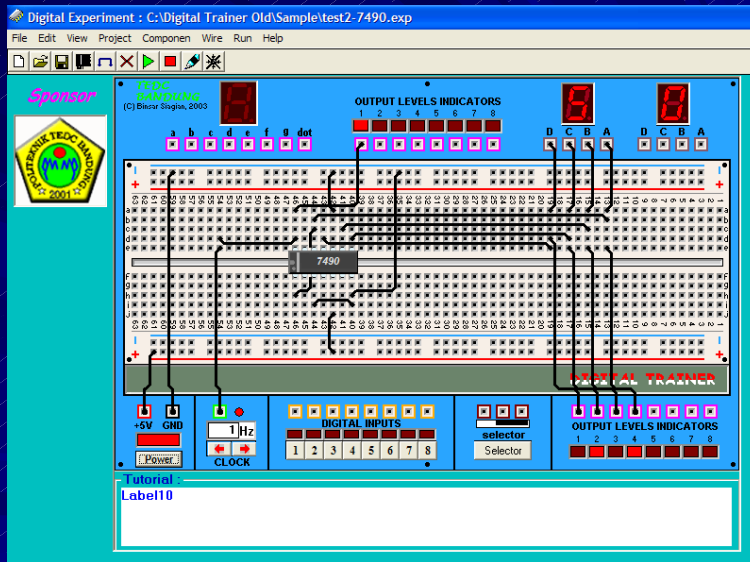
Slow Fast

NAND Gate NOR Gate XOR Gate

Page : 1- 2A 24 Nopember 2003 Jam : 8:13:45 PM Content List Previous Next

AEN Confrence 2003, Ariake
Washington Hotel, Tokyo

Digital Trainer Overview



AEN Conference 2003, Ariake
Washington Hotel, Tokyo

Typing Tutor Overview



AEN Conference 2003, Ariake
Washington Hotel, Tokyo

Thank you for your Attention !

Presented on December 11, 2003

by

**The Asia e-Learning Network Conference 2003,
Ariake Washington Hotel, Tokyo**

Binsar Siagian, TEDC Bandung Indonesia

The End.

AEN Confrence 2003, Ariake
Washington Hotel, Tokyo